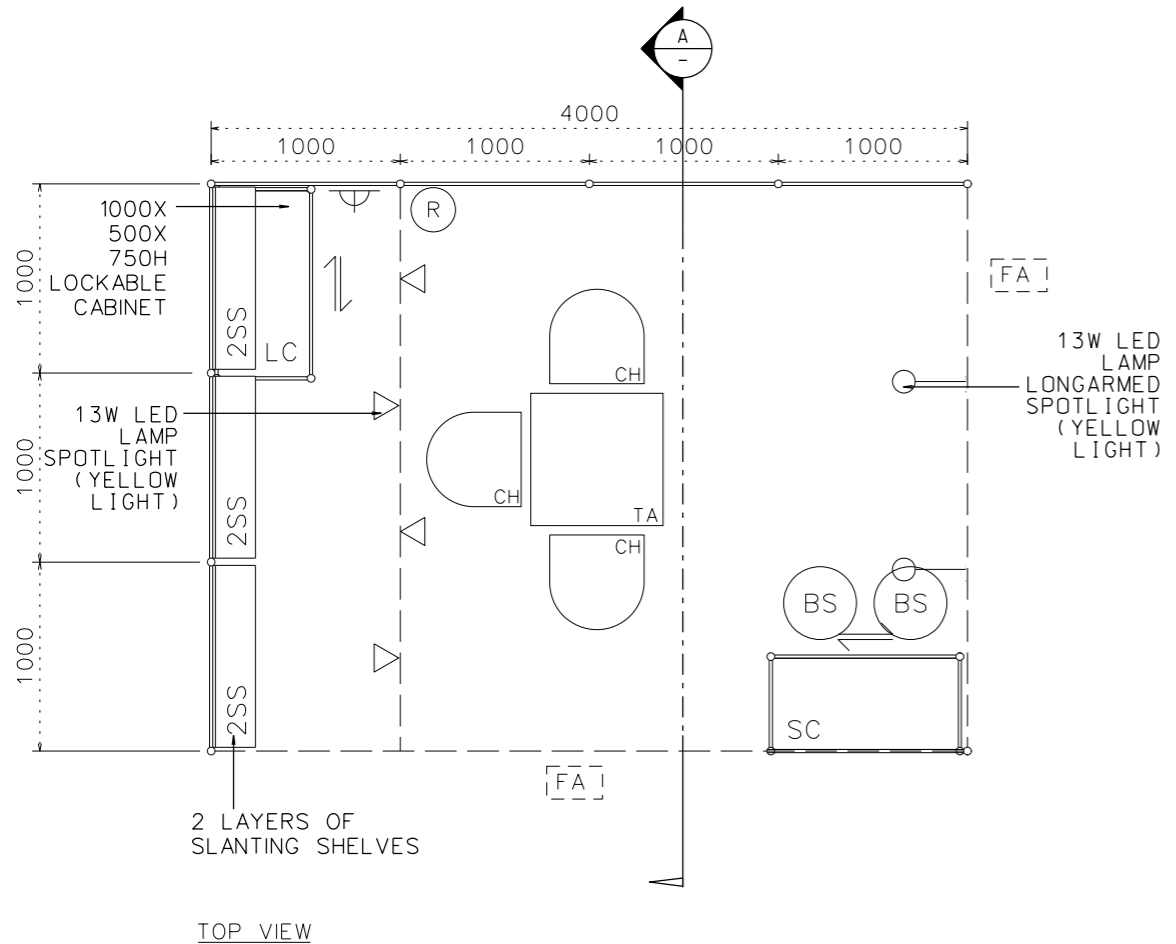
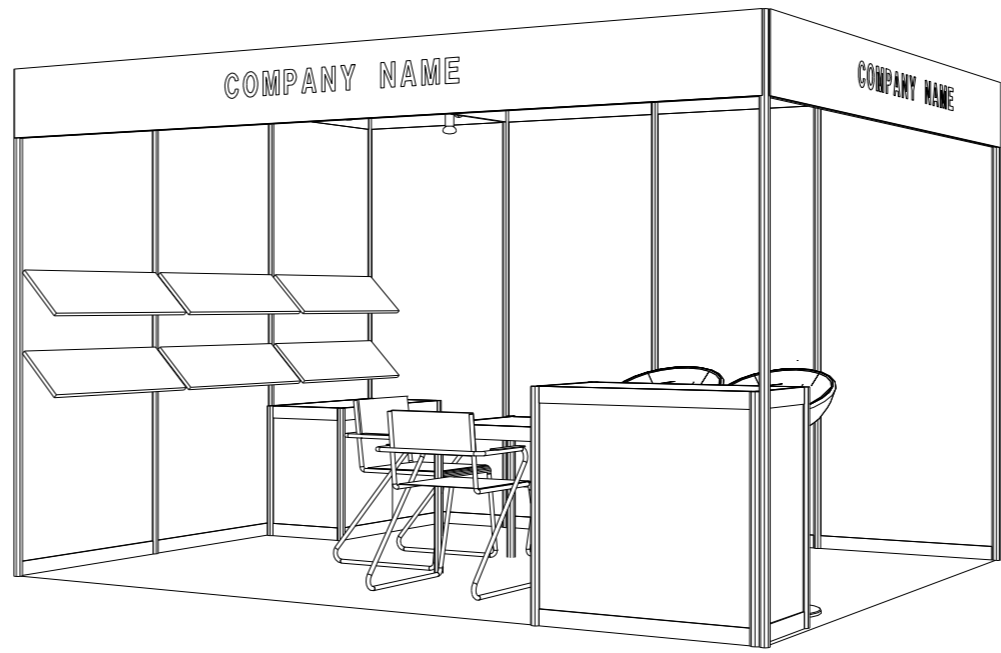


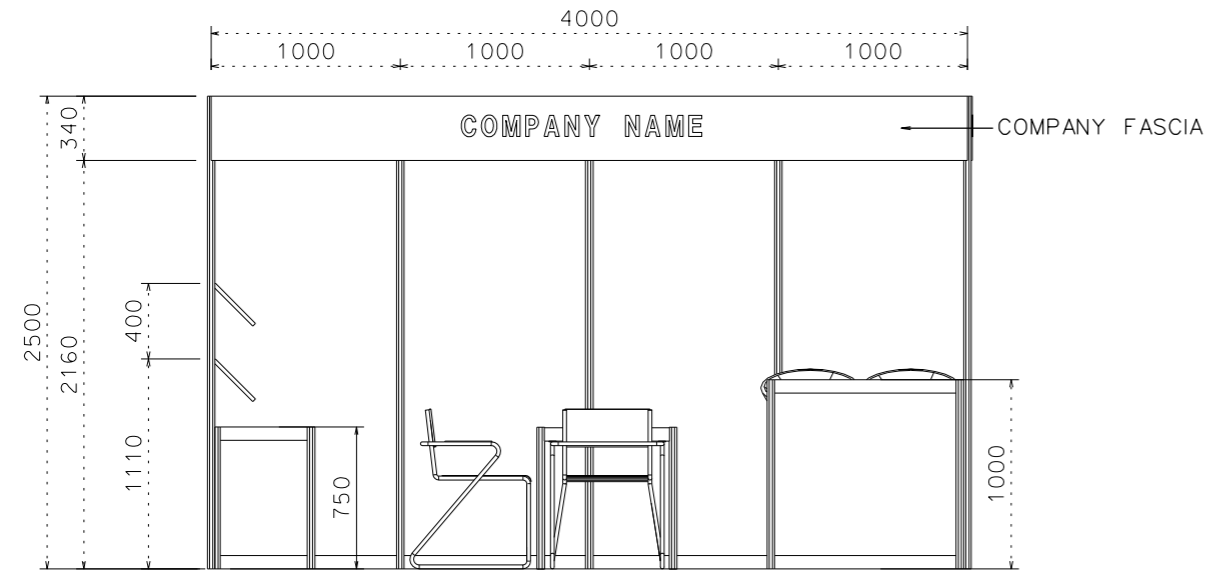
# 4M x 3M STANDARD RIGHT CORNER BOOTH (RETAIL DISPLAY, ADVERTISING AND SIGNS)



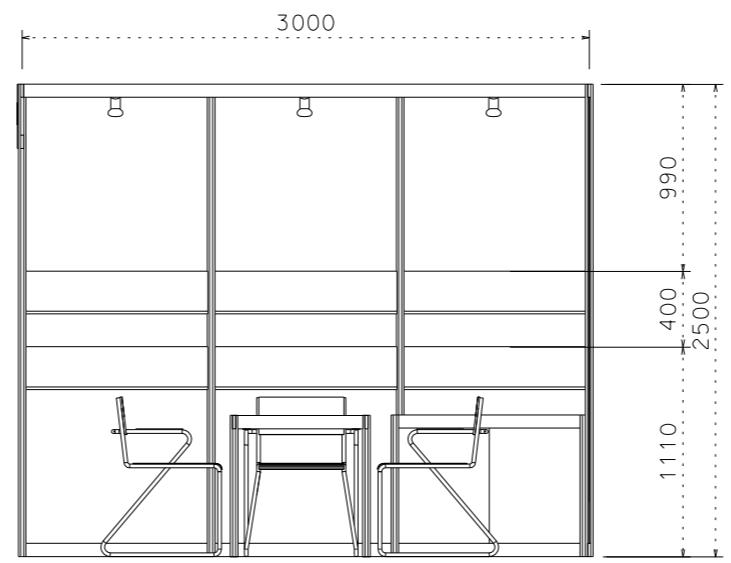
TOP VIEW



PERSPECTIVE VIEW



FRONT ELEVATION



SECTION A

STANDARD BOOTH FACILITIES		
LEGEND	DESCRIPTION	QTY
[SC]	1000 X 500 X 1000MM H SYSTEM COUNTER W/ LOCKABLE CABINET	1
[TA]	MEETING TABLE 700x700x750mm (LxWxH)	1
(CH)	BLACK LEATHER CHAIR	3
[FA]	COMPANY FASCIA	2
—○	13W LED LAMP LONGARMED SPOTLIGHT (YELLOW LIGHT)	2
▽	13W LED LAMP SPOTLIGHT (YELLOW LIGHT)	4
	CARPET	12 SQM
—=—=	CEILING BEAM	3M
[SS]	SLANTING SHELVES	6M
(R)	RUBBISH BIN	1
[LC]	1000L x 500D x 750MMH LOCKABLE CABINET	1
(BS)	BAR STOOL	2
⏏	500W POWER SOCKET	1

FILE PATH - I:\e-Booth drawing\0427 Print,packaging\CR INTERNAL USE\The World of Advertising and Signs 2019\8029\_4x3\_Booth\_World of Adv & Signs\_2022.dgn



**NOTES** UNLESS OTHERWISE SPECIFIED ALL DIMENSIONS ARE IN MM.

.....

.....

.....

REVISION  
1.0 22/09/2023..T1M

DATE: 09/12/2021

SCALE: 1 : 40 (A3)

DRAWN BY: JASON

CHECKED BY: .

**TITLE**

4M x 3M STANDARD RIGHT CORNER BOOTH (RETAIL DISPLAY, ADVERTISING AND SIGNS)

**PROJECT**

HK INT'L PRINTING & PACKAGING FAIR 2024

DATE: 27-30/04/2024

SHEET

**B29B**